

PET-FELT PANELS

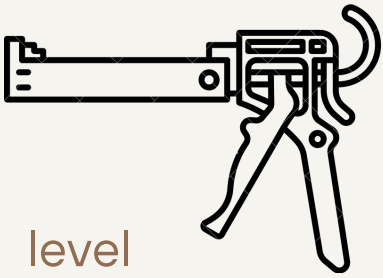
STEP BY STEP

INSTRUCTIONS

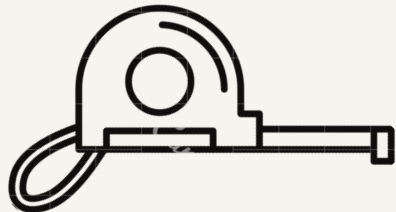
Before installation

Suggested tools

adhesive



roulette



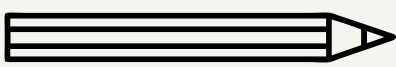
level



knife



pencil



The right side

The panels have a front and back side, make sure you will glue the right side. To do this, there are designators on each panel

NORDECA NORDECA



the process

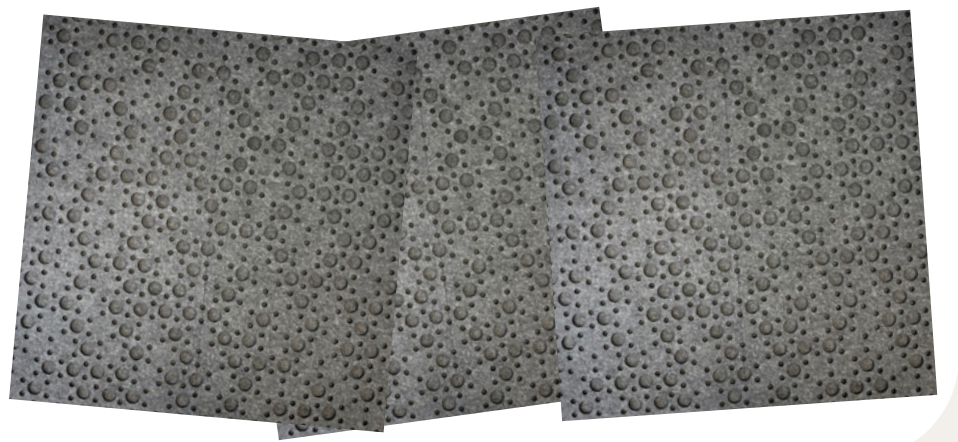
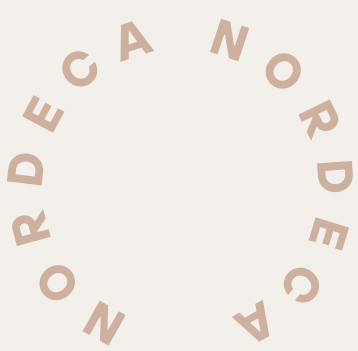


step one

Remove all unnecessary items from the wall.

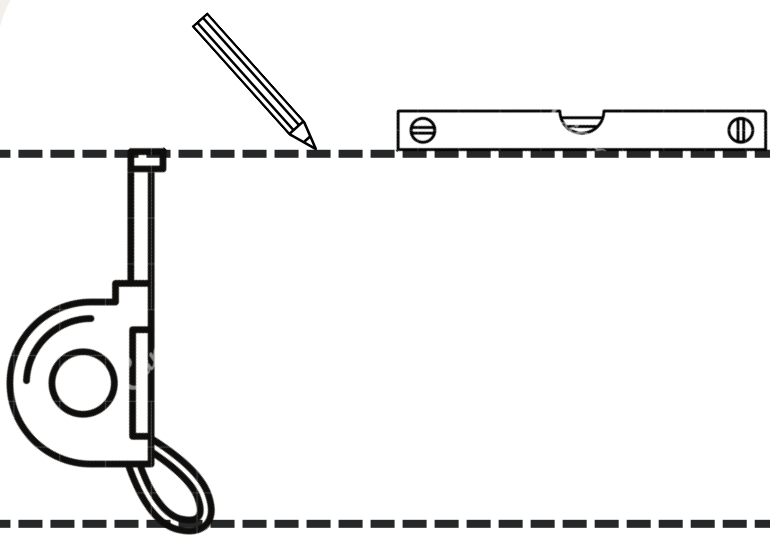
step two

Assemble the panels on the floor so that you get a pattern /pattern that you will transfer to the wall



step three

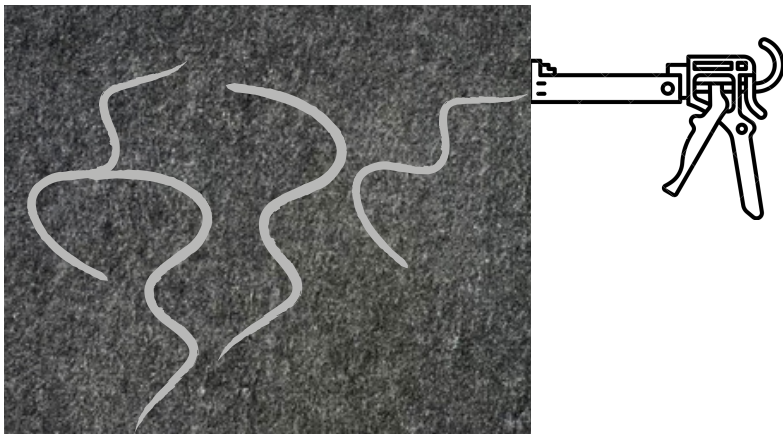
You can leave marks on the wall to stick the panels flat



step four

Apply glue to the back of the backside panel

If you purchased a set of backside panels only, then apply glue, glue the panel to the wall along the line and press them for 10-20 seconds

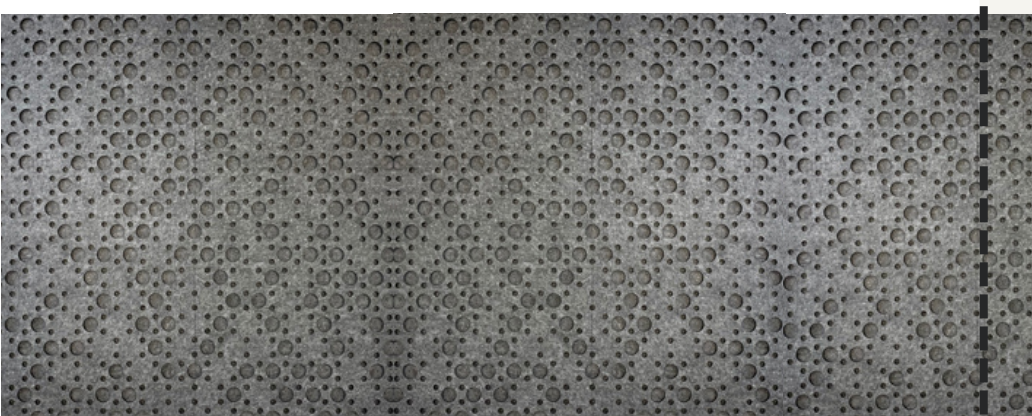


step five

Glue all the panels



Cut off the excess



step six

If you have purchased a set of front and rear panels, first glue the back panel, and then apply glue to the back of the front panel and glue it to the panel on the wall